



HARTWELL HOUSE & SPA

Hartwell House in the Vale of Aylesbury is one of Buckinghamshire's most celebrated country houses, and was the home in exile of King Louis XVIII of France from 1809 to 1814. As an hotel it has several magnificent reception rooms and 47 bedrooms and suites equipped to very high standards. The adjacent coach houses have been restored to provide an indoor swimming pool, health and fitness Spa and extensive meeting rooms.



Oxford Road, Near Aylesbury, Buckinghamshire HP17 8NR
Tel: 01296 747444 Fax: 01296 747450
E-mail: info@hartwell-house.com
www.hartwell-house.com



This 17th century house has been sympathetically restored by Historic House Hotels Limited since 1980, and was given to National Trust in 2008.

Two of the finest rooms are the large entrance hall and first floor drawing room both with oak panelling, splendid fireplaces and stone mullioned windows. They are furnished with antiques and fine pictures.



Bodysgallen's Health and Fitness Spa, approached by a short walk from the main Hall, has been converted from the original stone built farm, and has its own carpark. It contains a large swimming pool, spa bath, steam room, sauna, relaxation room and club room where meals and drinks are served.

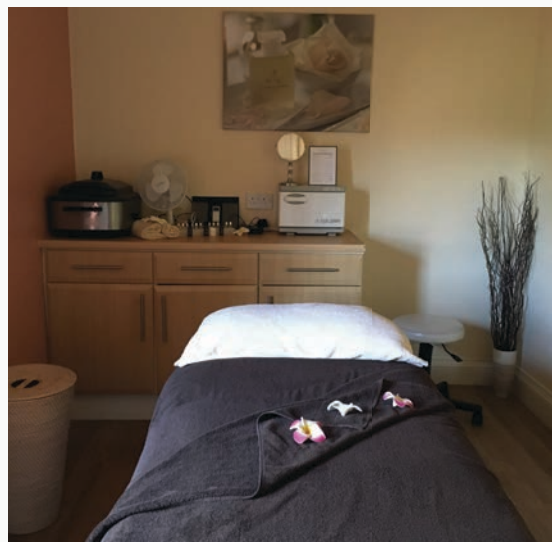
The superb gymnasium has all the latest equipment and fully qualified fitness instructors are on duty.

The Spa also has six beauty treatment rooms with qualified therapists providing the latest treatments from Aromatherapy Associates, Environ, CACI and Jessica, and is able to advise clients on the treatments which they will find beneficial. There is a programme of health and beauty days and half days, and a range of products available for sale.

Hotel guests have unlimited use of the Spa during their stay at Bodysgallen Hall, and there are cottage suites situated in the immediate vicinity for those who would like to be close to the Spa.

Guests can also play croquet in the gardens. There are several golf courses near the hotel, and riding can be arranged nearby.









Sixteen cottages, with picturesque names like Pineapple Lodge, Castle View and Gingerbread House are situated in the grounds, and provide self-contained accommodation for guests preferring a greater degree of privacy. The hotel also provides designated access for all.

The former stables adjacent to the Hall, now known as the Wynn Rooms, have been converted into rooms for meetings and private dining, ideal for conferences, cocktail parties, wedding civil ceremonies/ partnerships and other important occasions. Marquee events for up to 200 guests are possible in the gardens of Bodysgallen for exclusive use house parties.





The Dining Room, holds 3AA Rosettes, with imaginative food prepared by the award-winning chef using fresh local produce whenever available.

There are 15 extremely comfortable bedrooms in the Hall, each individually decorated, including four 'Principal Suites'.

